

Wzornik żaluzji pionowych

Vertical blinds Samples



Be inspired

edycja 26.04.2021

Asia



8501



8503



8504



8506



8510

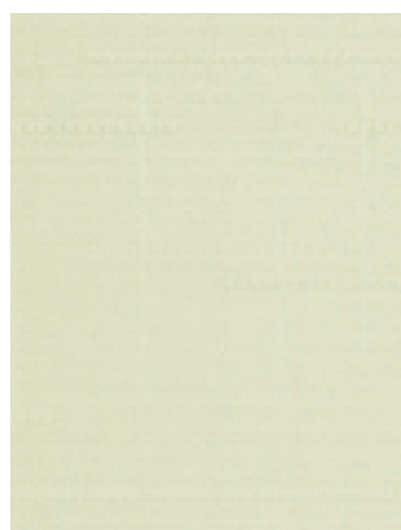


8511

waga	195 g/m ² ± 10
weight	
grubość	0,35 mm
thickness	
konserwacja	wilgotna ściereczka
maintenance	clearing with a damp cloth
szerokość lamel 127 mm	tak/yes
fabric width 127 mm	



8517



9283



9415

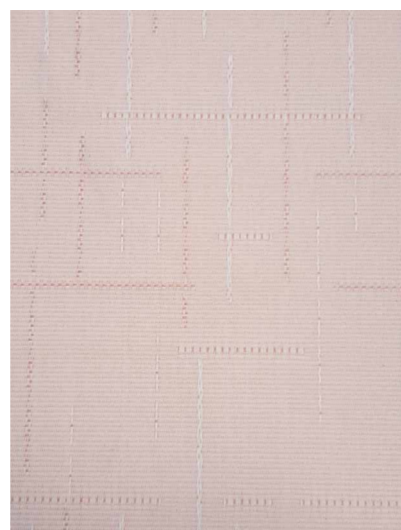
*zalecamy zamówienie próbki



8516



9285



9286

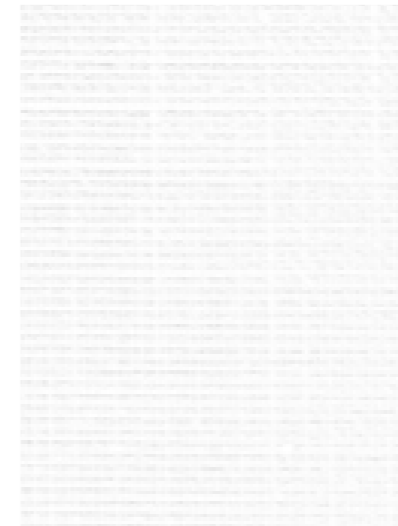


9287



9281

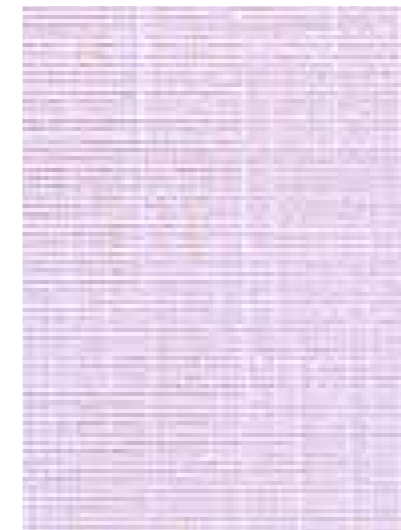
Shantung



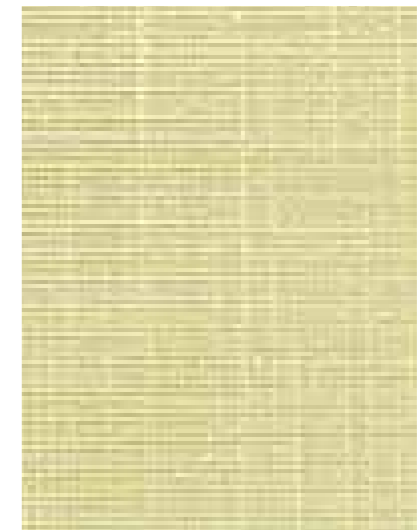
0.0



1.0



1.2



1.5



2.2

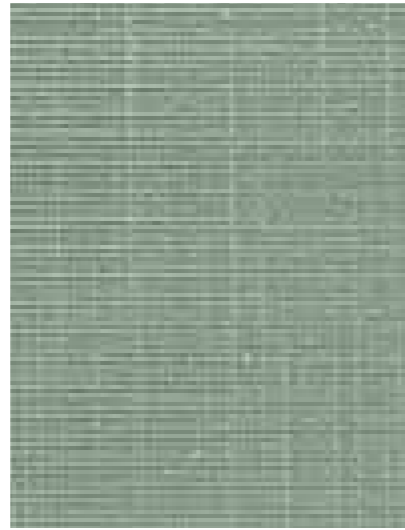


3.0

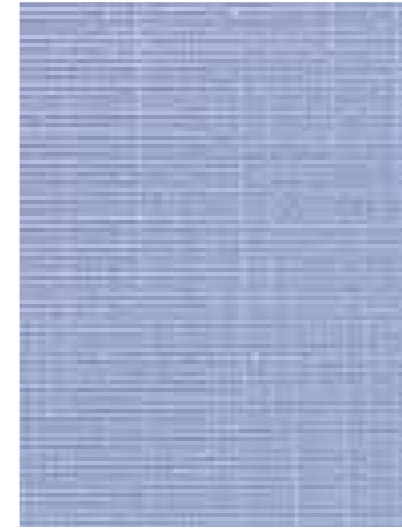
waga	210 g/m ² ± 10
weight	
grubość	0,40 mm ± 0,05
thickness	
konserwacja	wilgotna ściereczka
maintenance	clearing with a damp cloth
szerokość lamel 127 mm/89 mm	tak/yes
fabric width 127 mm/89 mm	



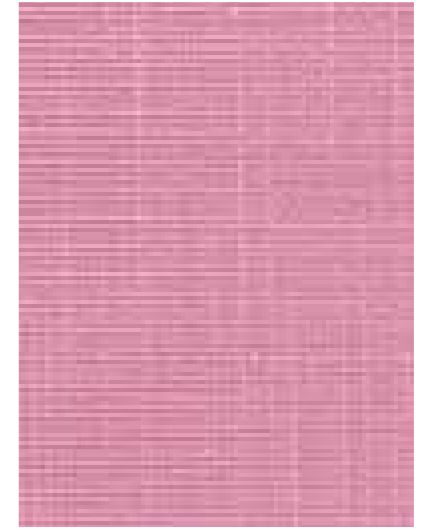
4.0



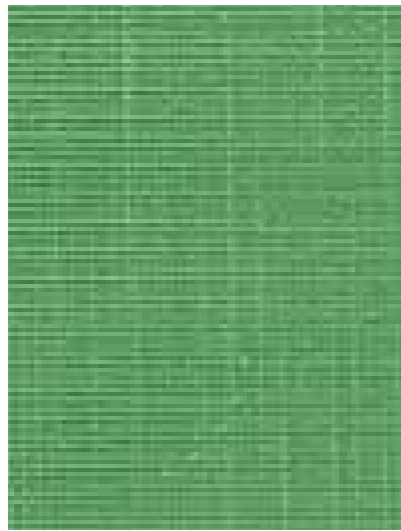
5.0



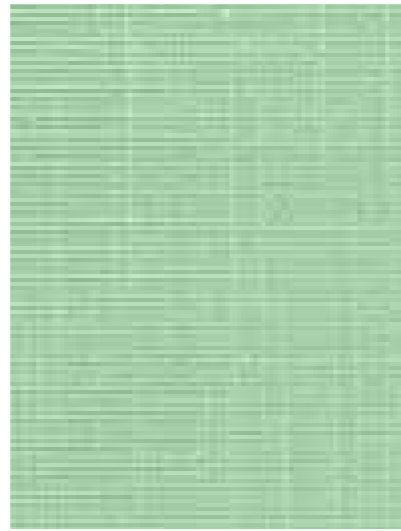
11.8



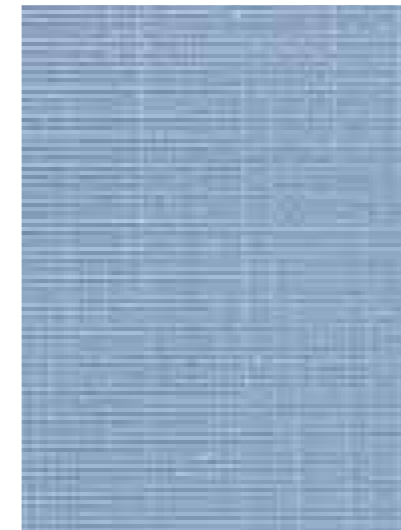
12.1



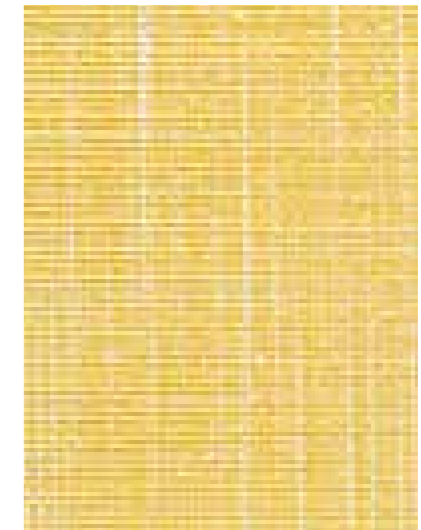
6.5



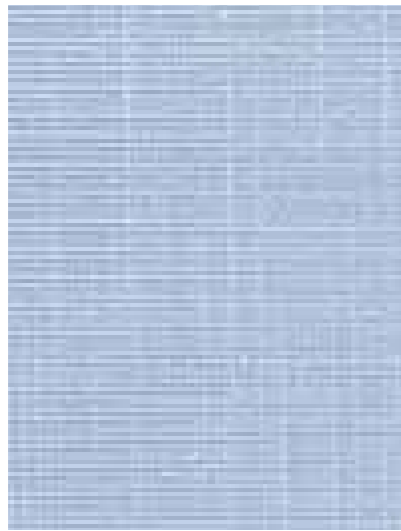
6.6



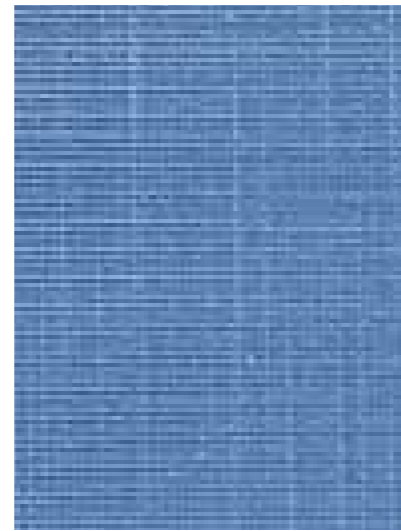
11.5



15.1

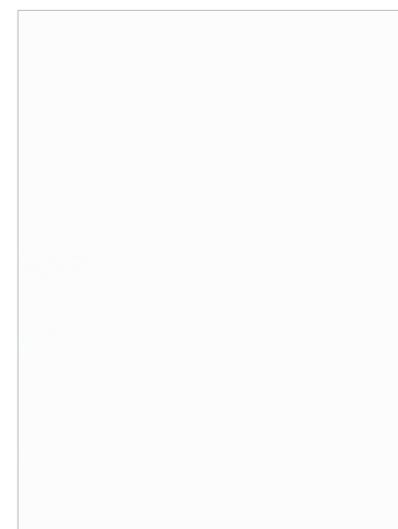


11.1

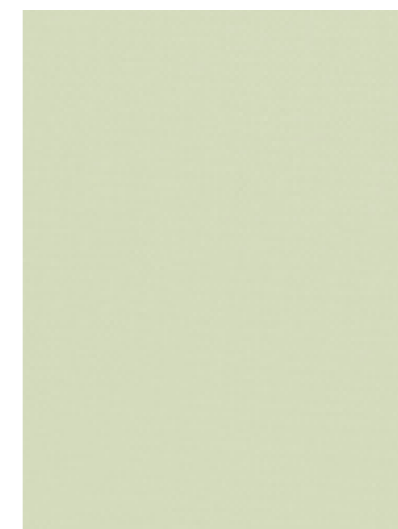


11.7

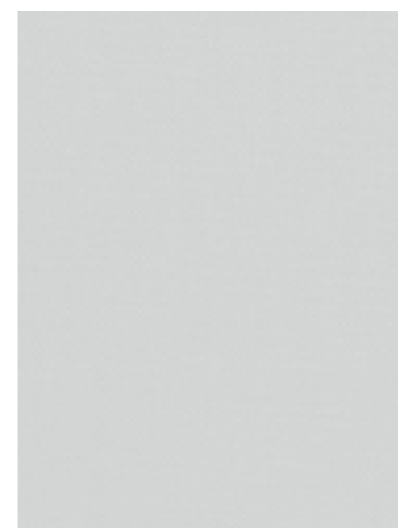
Vento FR



1



2.3



5



5.1



5.2



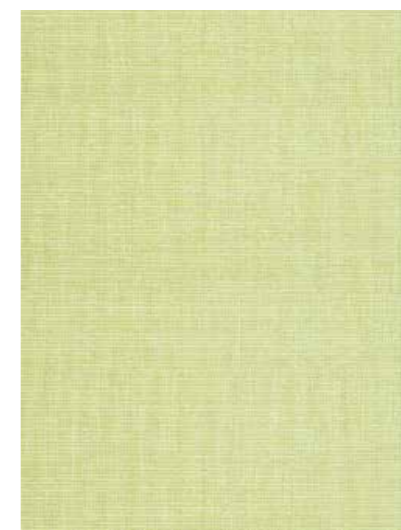
11.2

waga	230 g/m ² ± 10
weight	
grubość	0,28 mm ± 0,05
thickness	
konserwacja	wilgotna ściereczka
maintenance	clearing with a damp cloth
szerokość lamel 127 mm/89 mm	tak/yes
fabric width 127 mm/89 mm	

Miami



1.0



2.3



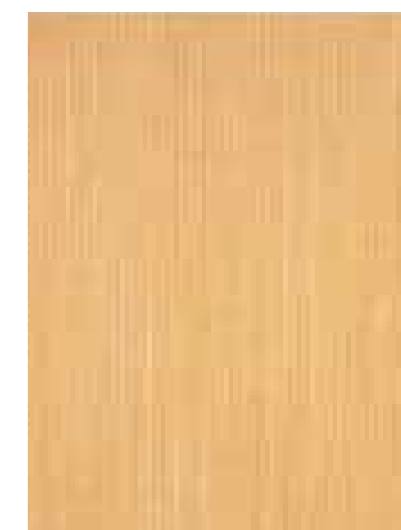
2.5



5.1



5.2



1.6



6.0

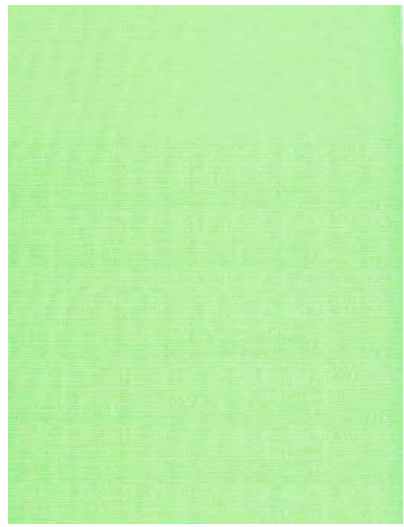


6.1

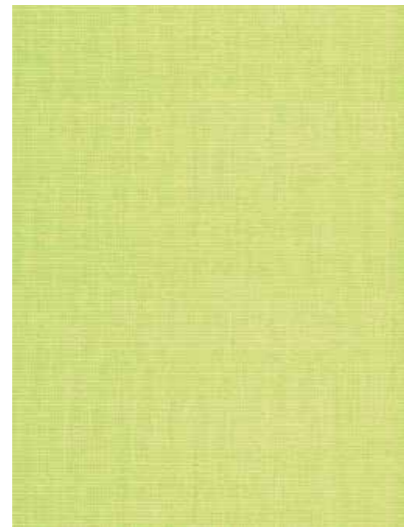


6.3

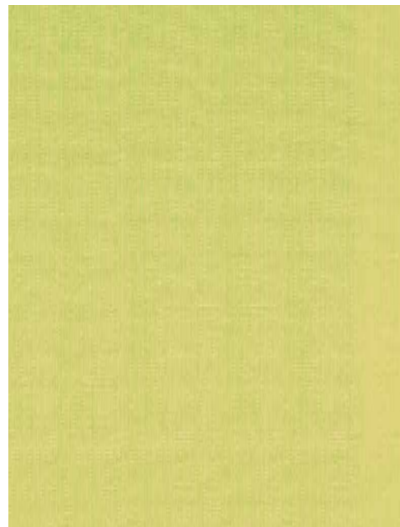
waga	185 g/m ² ± 10
weight	
grubość	0,30 mm ± 0,05
thickness	
konserwacja	wilgotna ściereczka
maintenance	clearing with a damp cloth
szerokość lamel 127 mm	tak/yes
fabric width 127 mm	



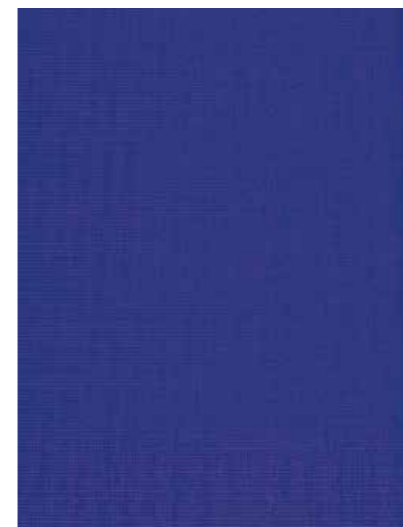
6.4



7.0



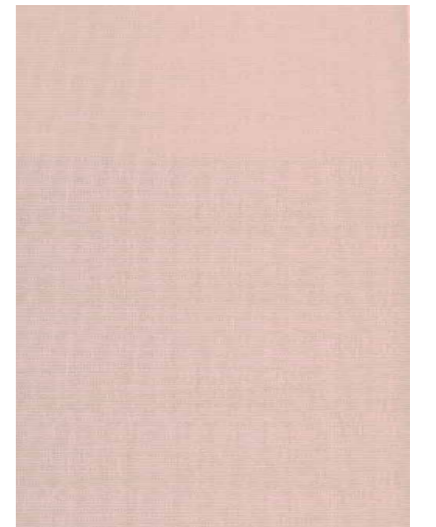
7.1



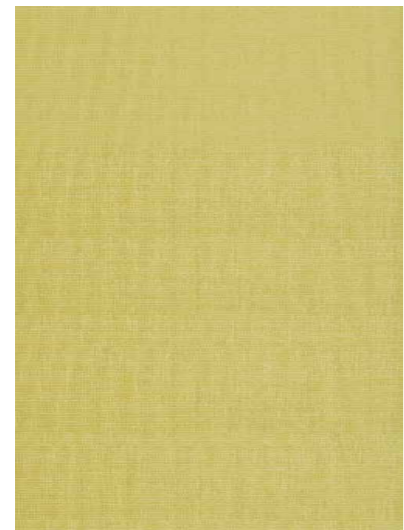
12.0



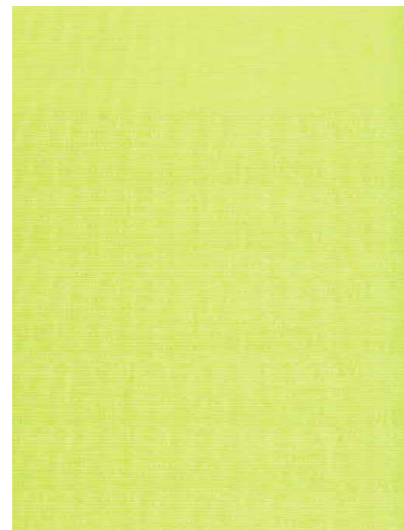
12.2



13.1



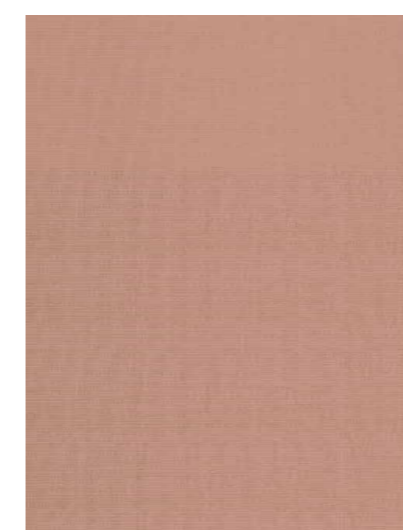
7.2



7.3



11.0



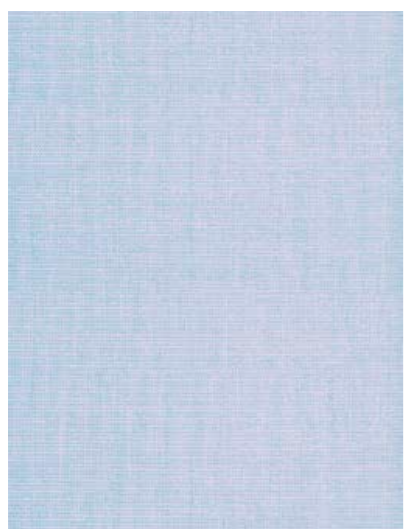
13.2



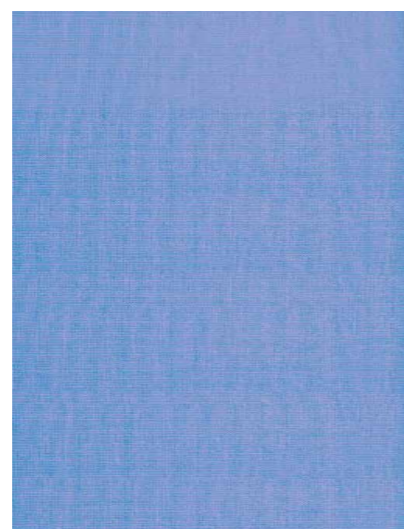
15.1



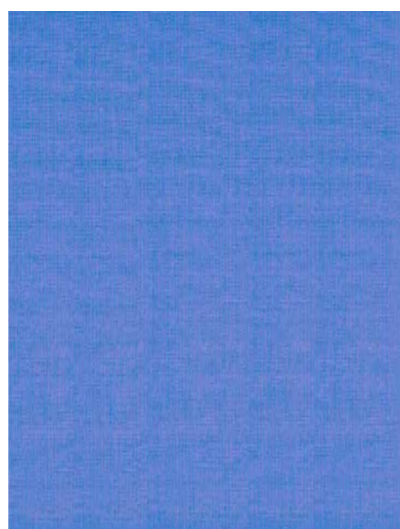
15.3



11.1

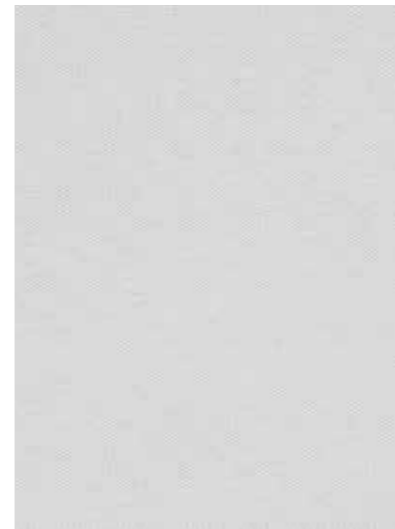


11.2



11.4

Kenia FR



711



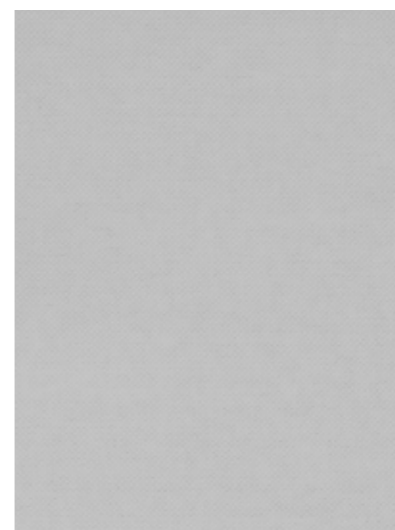
712



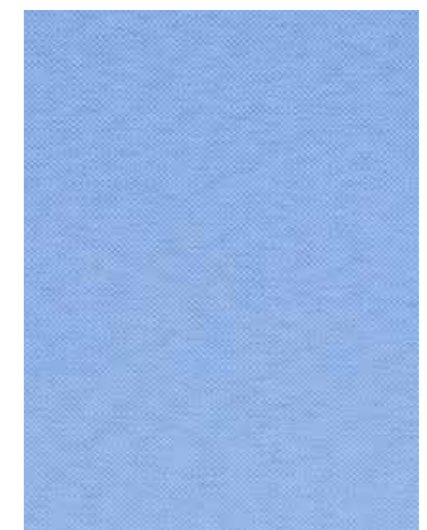
713



714



715



716

waga	280 g/m ² ± 10
weight	
grubość /thickness EN ISO 5084	0,30 mm ± 0,05
konserwacja	wilgotna ściereczka
maintenance	clearing with a damp cloth
nierozprzestrzenianie płomieni	PN-EN ISO 6940:2005 i PN- EN ISO
fire retardencji	6940:2005
szerokość lamel 127 mm/89 mm	tak/yes
fabric width 127 mm/89 mm	



717



718



719



720

Lima



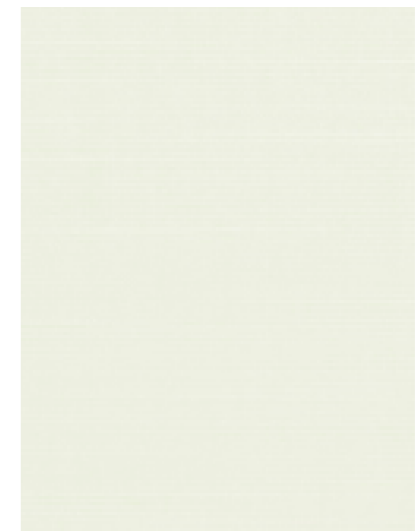
7337



7403



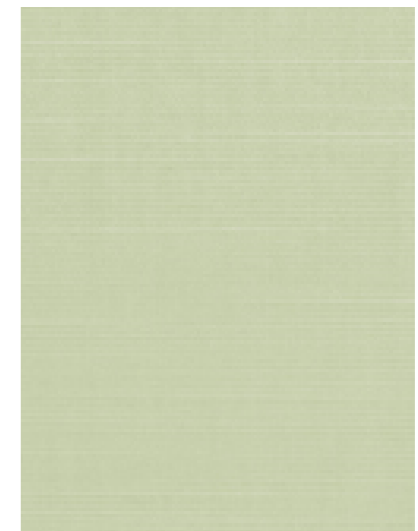
7404



7425



7428



7429

waga	190 g/m ² ± 10
weight	
grubość	0,38 mm ± 0,05
thickness	
konserwacja	wilgotna ściereczka
maintenance	clearing with a damp cloth
szerokość lamel 127 mm	tak/yes
fabric width 127mm	



7545



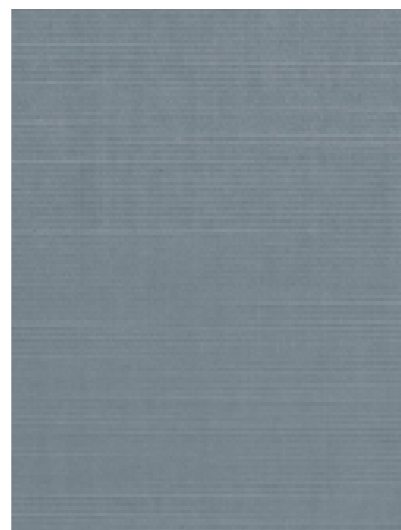
7546



8207



8203



8204



8205



8206



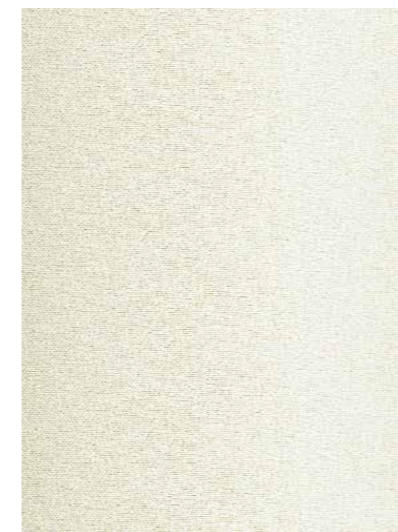
Metallic



7260



7279



7296



7297

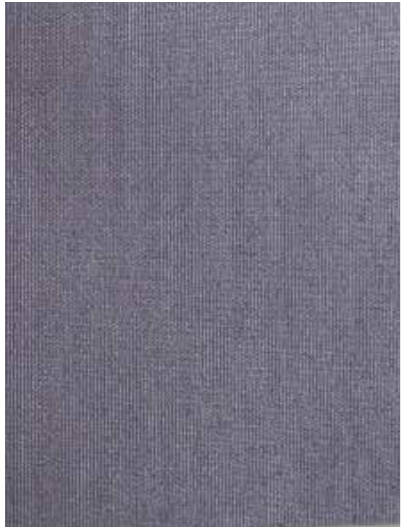


7298



7299

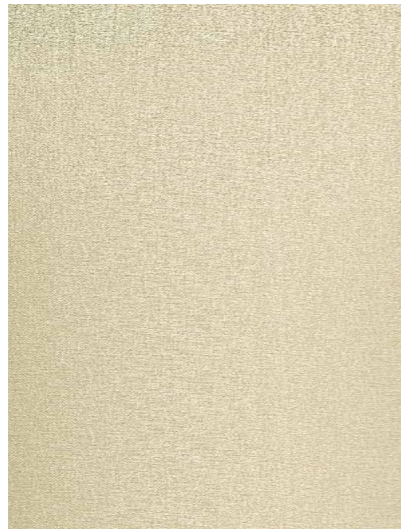
waga	195 g/m ² ± 10
weight	
grubość	0,38 mm ± 0,05
thickness	
konserwacja	wilgotna ściereczka
maintenance	clearing with a damp cloth
szerokość lamel 127 mm	tak/yes
fabric width 127 mm	



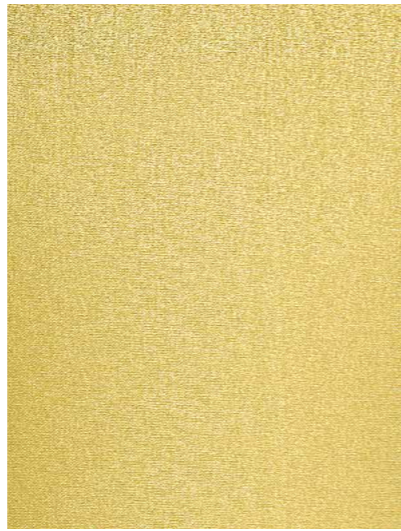
7300



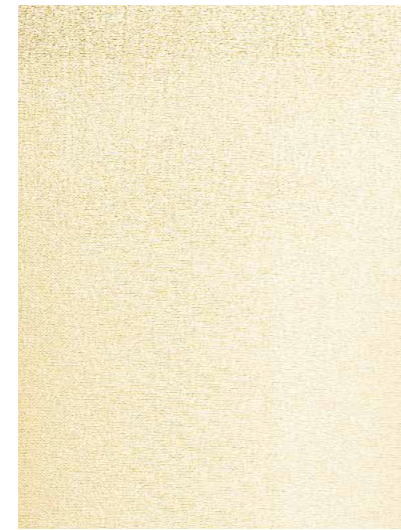
7301



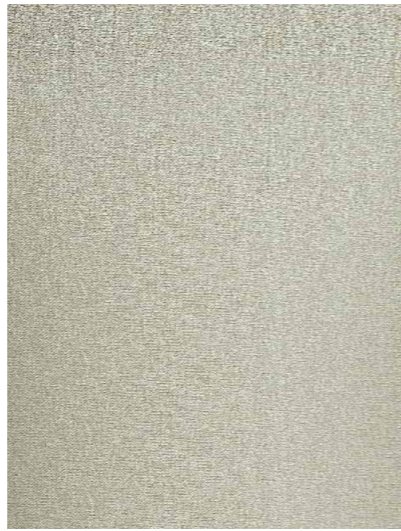
7849



7850



7854



7880

Contract FR



3.0



5.1



1.0

waga	185 g/m ² ± 12
weight	
grubość	0,35 mm ± 0,05
thickness	
konserwacja	wilgotna ściereczka
maintenance	clearing with a damp cloth
szerokość lamel 127 mm/89 mm	tak/yes
fabric width 127 mm/89 mm	

Natura FR



1.0



2.0



1.5

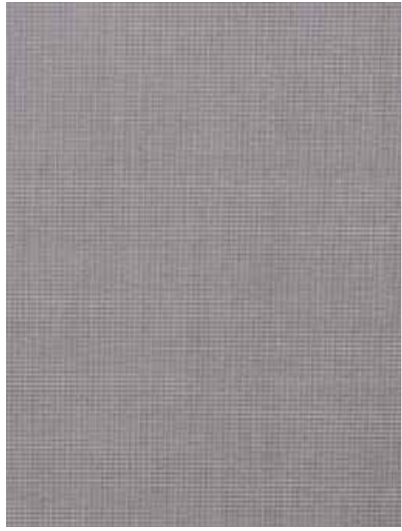


1.3

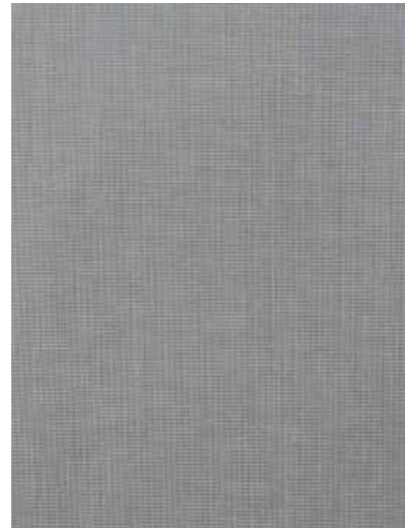


3.0

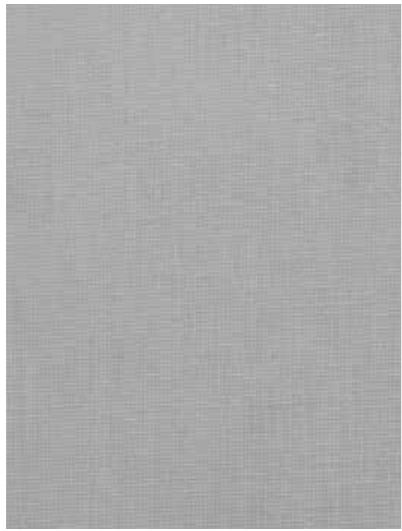
waga	210 g/m ² ± 12
weight	
grubość	0,30 mm ± 0,05
thickness	
konserwacja	wilgotna ściereczka
maintenance	clearing with a damp cloth
szerokość lamel 127 mm/89 mm	tak/yes
fabric width 127 mm/89 mm	



1.4



5.0



5.1

Outlet



Crepe 8



Crepe 9



Crepe 10



Kimono 00

Końcówki kolekcji

Do wyczerpania zapasów/ while stock last



Kimono 7.6



Cristal 13



Asia FR 8206



Asia FR 8208



Asia FR 8209



Asia FR 8213



Asia FR 8214

Informujemy również, że przed zamówieniem należy skontaktować się Działem Handlowym w celu potwierdzenia dostępności danej tkaniny do żaluzji pionowych.

Prezentowane kolory i wzory mają charakter poglądowy i w zależności od monitora będą różnie wyświetlane. W celu wybrania odpowiedniego koloru należy posłużyć się oryginalnym wzornikiem Vertex S.A.

Notice: Fabric`s colours may be different from the real, it depends on the monitor settings.